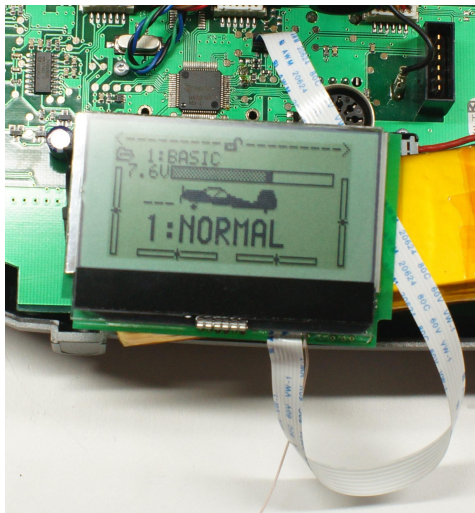




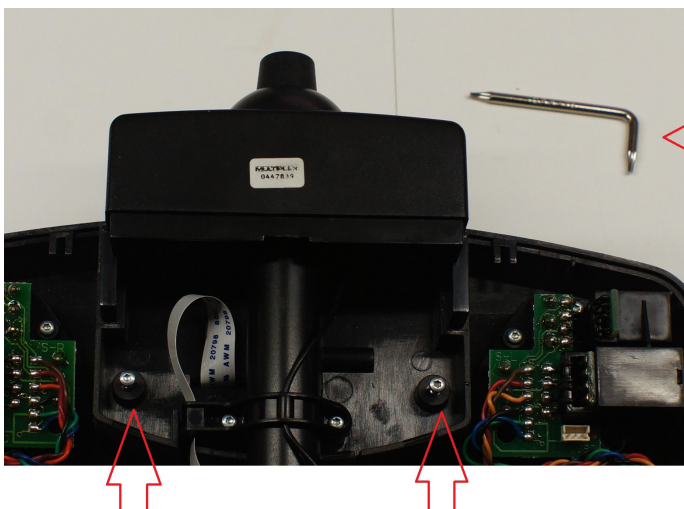
### Thank you for choosing our product!

This KIT was designed and made to help you to solve the problem like on the left picture or help you if you want to get excellent LED bright white backlight for your good working TX unit.

Let's start our Upgrade!

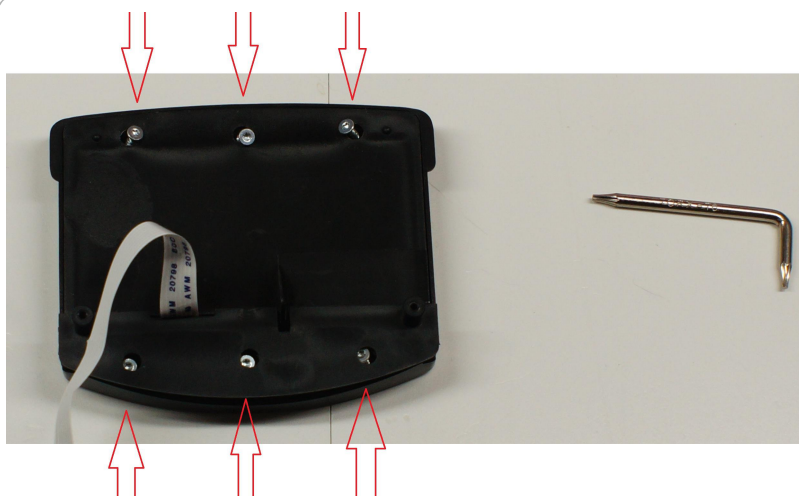


First of all, please check that your new LCD is working, to be sure that it was not damaged during the shipping. To do this you need to plug flex wire into your TX FPC socket and power on your TX unit. If everything is OK please disconnect your TX battery and live it disconnected.



Using standard MPX hex screwdriver or any better screwdriver, remove two hex screws from your TX. After this - detach flex wire from the TX main board and remove complete LCD mounting plastic case with LCD from the front panel.

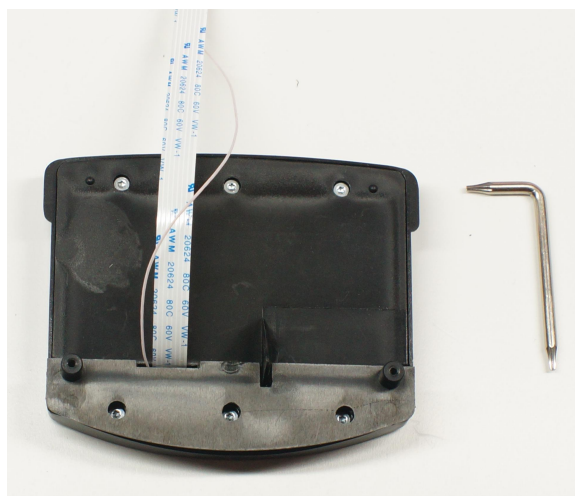




Remove 6 hex screws from the back of LCD mounting case



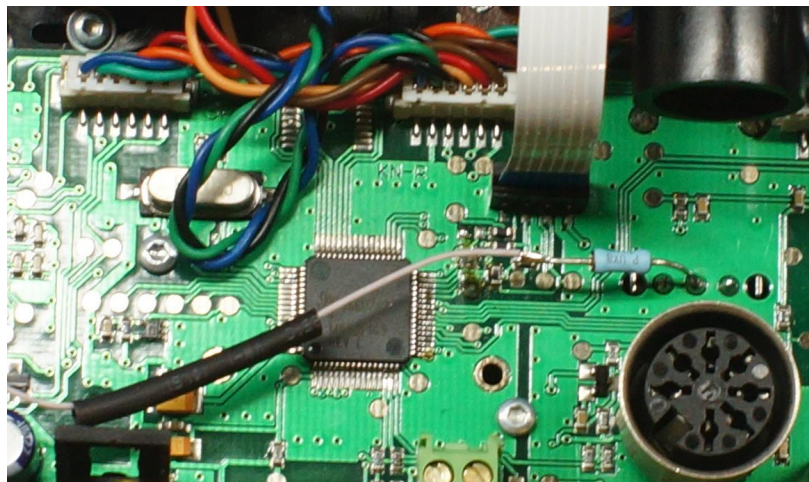
Remove all unused obstructing plastic from the inside of LCD mounting case(if you have paper version of this manual please check our website for online hi-resolution images pdf version to see details)



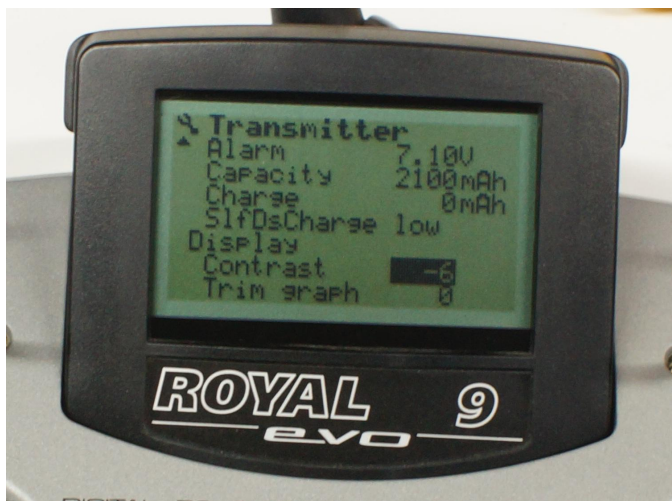
Check that you can assemble LCD mounting case without applying any force and than do it. Place each screw on it's place. And place LCD mounting case on it's place too. Than don't forget to mount it using two hex screw.



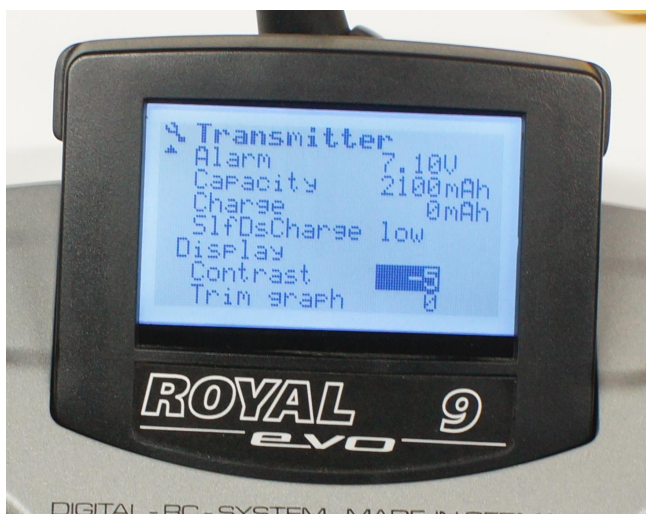




You need to solder the supplied 100R resistor between the teflon wire and middle pin of TX main switch. It's very simple, please don't forget to attach insulation tube.



Now you can attach your battery back and try to power on your TX. From the contrast menu you can power ON and power OFF your TX LED backlight. If "Contrast" is "-6" or lower - backlight is turned OFF



If "Contrast" is "-5" or higher - backlight is turned ON.

**Thank you again for choosing our product!**

**Warranty:** Our LCD KIT have 1year warranty for any problems. We also ready to repair your TX for free if you will damage it using our product!

